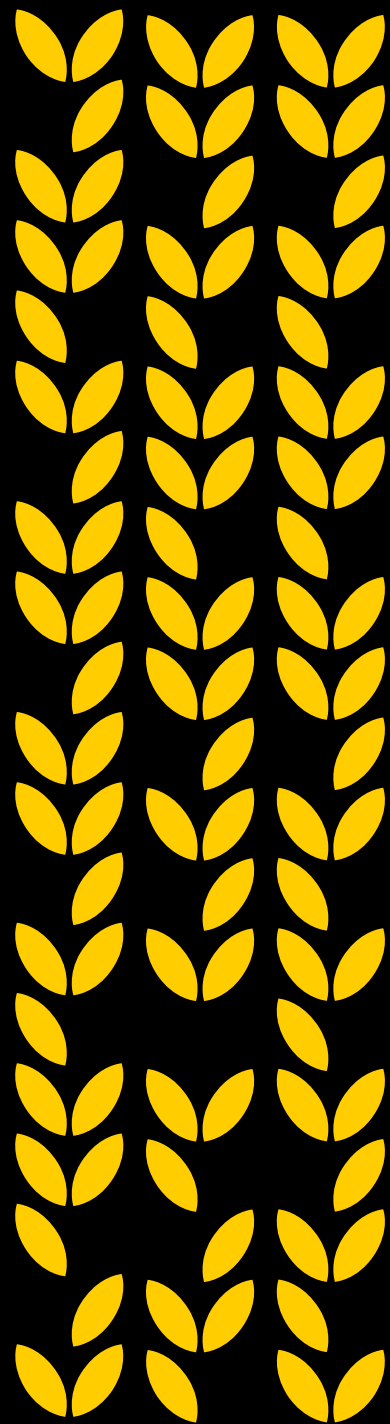




WICHITA STATE
UNIVERSITY

*COMMUNITY ENGAGEMENT
INSTITUTE*



AN INTRODUCTION TO THE COMMUNITY ENGAGEMENT INSTITUTE

GETTING STARTED: SELF-HELP NETWORK

Originally named the Self-Help Network, WSU's Community Engagement Institute was founded in 1984 by Evelyn Middelstadt. The Self-Help Network was focused on providing referrals to self-help support groups. Eventually, Evelyn was joined by Wichita State University (WSU) professor Dr. Greg Meissen, and in 1985 the Network moved to the WSU Psychology Department. It became nationally recognized for its research and best practices in self-help support groups.

EXPANSION TO CENTER FOR COMMUNITY SUPPORT & RESEARCH (CCSR)

Throughout the 1990s, the Self-Help Network was asked to support other local and state projects. Some of these included the Kansas Community Leadership Initiative, the statewide mental-health Consumer Run Organization network, Project ACCESS, and Compassion Kansas. In addition, dozens of requests came from nonprofits, coalitions, local governments, and others looking for help with strategic planning and direction, board governance and development, evaluation, leadership development, and collaboration.

Given this expansion, the Self-Help Network changed its name in the mid 2000s to the Center for Community Support and Research. During that time it moved to downtown Wichita to better serve the local and statewide community. In 2009, leadership transitioned to Dr. Scott Wituk who had worked at CCSR since 1993.

COMMUNITY ENGAGEMENT INSTITUTE AT WSU OLD TOWN

CCSR's efforts in leadership, mental health, public health, and assistance to nonprofits and community coalitions became more widely recognized. These demands required a different organizational structure to be responsive to community partners. Therefore, in 2015 the Community Engagement Institute was established and now houses six centers dedicated to serving communities. With over 70 staff and students, additional office space was needed. In 2015 the Community Engagement Institute moved to WSU Old Town at 238 N. Mead.

CENTERS & INITIATIVES

Center for Applied
Research & Evaluation

Center for Behavioral
Health Initiatives

Center for Leadership
Development

Center for Organizational
Development & Collaboration

Center for Public
Health Initiatives

The IMPACT Center

Prevention Initiatives

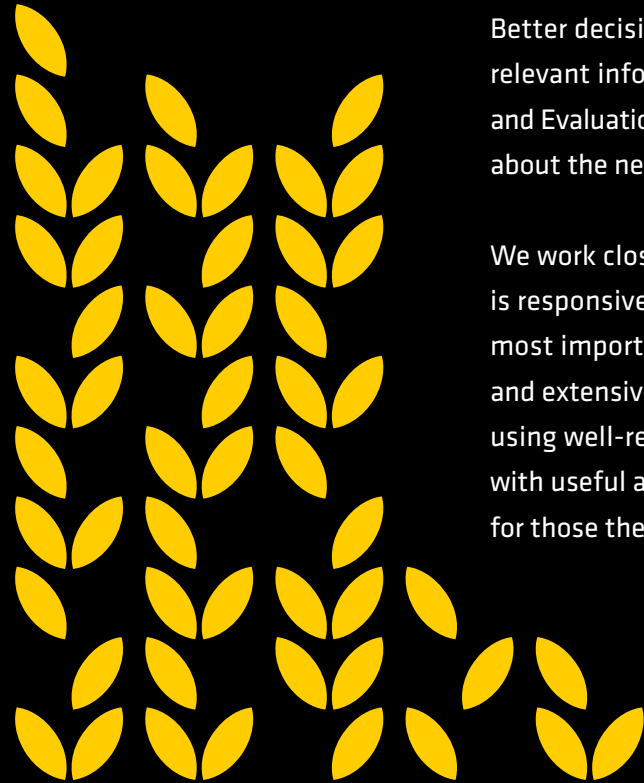
Early Childhood Initiatives



CENTER FOR APPLIED RESEARCH & EVALUATION

Better decisions are made when there is access to timely, accurate, and relevant information. With this in mind, the Center for Applied Research and Evaluation assists organizations and communities in developing clarity about the need for and effectiveness of their efforts or services.

We work closely with organizations to ensure our research and evaluation is responsive to their unique needs, helping answer the questions that are most important to them. Staff have backgrounds across many disciplines and extensive experience with diverse methodologies. We are recognized for using well-respected and innovative approaches that provide our partners with useful and understandable information to help them make a difference for those they serve.





CENTER FOR BEHAVIORAL HEALTH INITIATIVES



Behavioral or mental health touches the lives of everyone. The Center for Behavioral Health Initiatives works to improve the effectiveness of behavioral health treatments while also creating environments and communities in which behavioral health issues and disabilities are less likely to occur in the first place. From prevention to support and treatment, center staff bring innovative, peer-driven practices and approaches to the behavioral health system.

We actively partner with behavioral health providers, grass-roots peer support, state agencies, advocacy organizations and community coalitions so that people develop resiliency and experience the realities of recovery.

CENTER FOR LEADERSHIP DEVELOPMENT

The Center for Leadership Development prepares individuals and organizations to lead more intentionally and effectively by designing and facilitating individualized, immersive leadership experiences. Our goal is to enable people to lead in changing times – knowing that all times are changing times.

The activity of leadership is critical when a person or an organization needs to shift gears in order to meet an aspiration or adapt to new circumstances. The Center for Leadership Development prepares individuals and organizations to take risks and manage change. The center's team designs and facilitates individualized, immersive leadership experiences which challenge participants' expectations, foster an innovative spirit, and fuel the desire for continued learning. Coaching offered by the center's highly trained staff challenges clients to implement what they learn and also provides a confidential thinking partner for anyone who is trying to lead.

The center supports businesses, nonprofits, state and local governments, and individuals to make progress on complex, persistent issues and to lead in constantly changing environments.





CENTER FOR ORGANIZATIONAL DEVELOPMENT AND COLLABORATION

Organizations and groups in the social, health, and government sectors must develop their capacity to succeed in an ever-changing environment. The Center for Organizational Development and Collaboration serves nonprofit organizations, government entities, and community coalitions.

We've worked with hundreds of local and state organizations, helping them make progress on setting goals, creating actionable plans, and developing their programs or boards. Staff support community coalitions that are working together to make progress on issues they care about. Using contemporary group facilitation techniques, staff help organizations and communities create a shared vision, chart a course for progress, and hold participants accountable.



CENTER FOR PUBLIC HEALTH INITIATIVES

The Center for Public Health Initiatives believes that strategic partnerships that build capacity are needed for Kansas to maintain a high performing public health system. CPHI provides technical assistance, training, and evaluation support for local health departments and other organizations that provide public health services.

Public health promotes and protects the health of people and the communities where they live, learn, work, and play. The Center for Public Health Initiatives works to improve the public health system in Kansas by empowering people, developing organizations, and strengthening systems. Center staff empower people through training, support, and coaching; develop organizations through strategic planning, agency performance improvement, and capacity building; and strengthen systems by facilitating statewide collaborative initiatives, providing peer learning opportunities and creating opportunities for change .

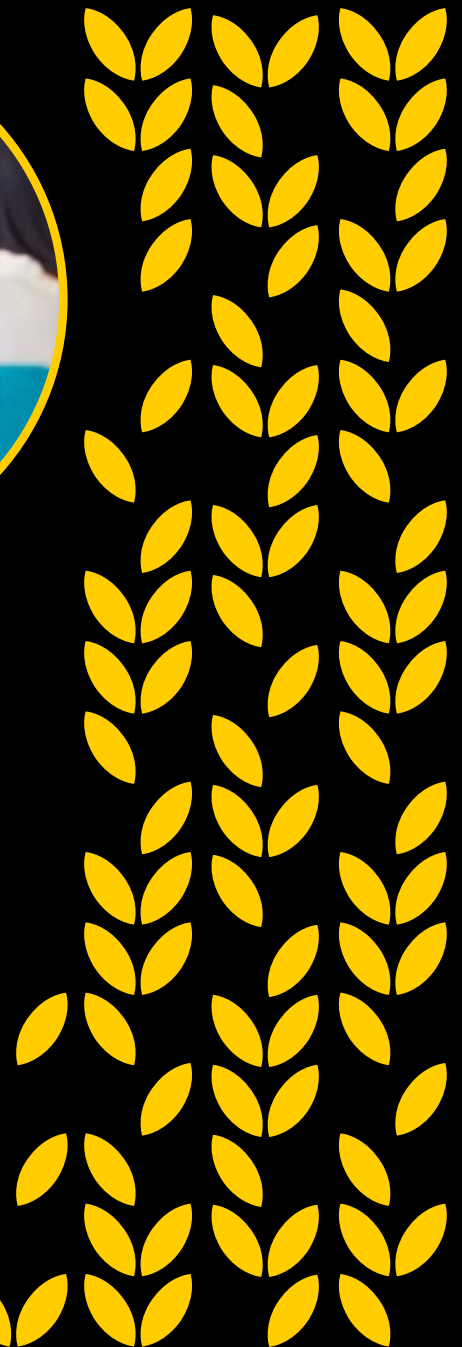
THE IMPACT CENTER



Many social, health, and civic challenges require more people to get actively involved in their communities. The *IMPACT* Center strives to connect people with opportunities to *IMPACT* their community.

Developing and leveraging human capital to *IMPACT* community is central to all we do. Through internships, fellowships, and volunteer opportunities, people are able to engage their communities and organizations.

The *IMPACT* Center is dedicated to bringing innovative strategies for community engagement through projects such as the KanCare Ombudsman Volunteer Project, the nationally-recognized Self-Help Support Group Services, and the WSU VISTA Fellows Program.

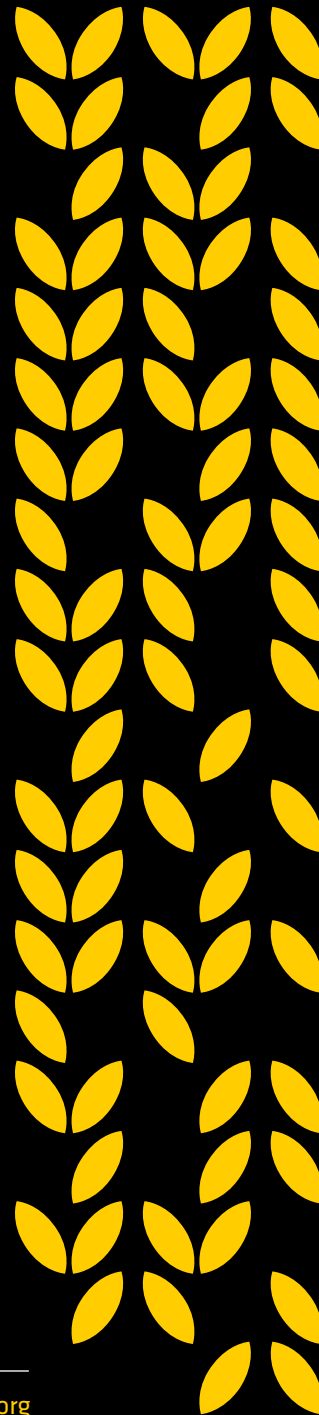




PREVENTION INITIATIVES

The Prevention Initiatives team is dedicated to supporting communities so that they can select and implement evidence-based strategies related to the prevention of problem-gambling, substance abuse, suicide, and other aspects of behavioral health promotion. Drawing on decades of experience, we recognize the risk and protective factors for many of these issues are shared across the community.

Guided by SAMHSA's Strategic Prevention Framework, we help communities learn and work together to create shared prevention goals and efforts. Prevention Initiative team members take a lead role in the communication and partnership of the Kansas Prevention Collaborative, which includes coalitions across the state. This role involves coordinating and facilitating in-person meetings that help participants learn from each other and create momentum for action, offering virtual meetings and trainings on specific topics most important to communities, and maintaining and assisting communities with awareness to help support their activities.





EARLY CHILDHOOD INITIATIVES

Safe and stable early years provide the foundation for improving outcomes for Kansans and for Kansas communities. The Early Childhood Initiatives team helps the efforts of organizations and coalitions to create systems and policies that prioritize very young children and their families. Communities make more progress improving lives when we get the early years right.

Bringing deep experience in both coalition building and early childhood policy, staff act as an extension of leadership teams. We contribute structure needed by the disparate partners who come together to make progress on early childhood issues. Our involvement is proven to help groups focus on system-level change, engage new partners, work across sectors, and communicate about the promise of lasting solutions.



WICHITA STATE
UNIVERSITY

COMMUNITY ENGAGEMENT
INSTITUTE

COMMUNITYENGAGEMENTINSTITUTE.ORG

OFFICE LOCATION


238 N Mead St.
Wichita, KS 67202

toll free in KS 1.800.445.0116

phone: (316) 978-3843

fax: (316) 978-3593

CONNECT WITH US

wsuEngagement 

wsuCEI 